



 **ALUINCO**

 **INGENUITY IN
PIONEERING**

CONTENTS

ABOUT US

VISION & VALUES

ORGANISATION CHART

METHODOLOGY STATEMENT

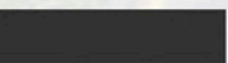
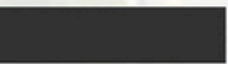
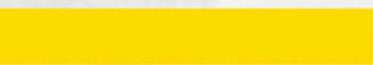
RESOURCES

SUPPLIERS

CLIENTS

PROJECTS

CERTIFICATES



**OUR MACHINES DON'T
MAKE THE DIFFERENCE,
OUR PEOPLE DO.**



ABOUT US

Alumco is a manufacturer of architectural aluminium building products and systems for the construction industry. Alumco's value and future growth are rooted in a unique combination of resources, exceptional people, proprietary technologies, natural resources, strategic alliances, and a global network of world-class plants and equipment.

Alumco is tackling the challenges of today's complex environment by balancing experience with change and ongoing improvement. We are committed to responding to our customers' needs in every way possible, from new product offerings, environmental responsibility and communications to final delivery.

As we renew and re-engineer our capabilities, our focus on quality, reliability and innovation remains constant. Machines don't make all the difference, people do. Alumco business system is designed to give Alumco's people the opportunity to be the best to achieve world standard practices, processes, technologies, and customer collaborations as a way of life.

Alumco's staff seeks to translate values into action every day of the year. In business, community, and society, Alumco is a team of professionals striving for perfection and steering by a clearly stated, shared set of values. Financial strength gives us the freedom and flexibility to achieve our vision and live our values.

Alumco succeeds when its clients succeed. Everything we do and everything we're building toward must begin with that reality.





METHODOLOGY STATEMENT

The following will highlight the scope of work and major steps involved in carrying out the aluminum, glazing works and other metal and related works so as to meet the highest levels of quality as per the company's objectives.

The project will be carried out according to the following steps.

Once the contract is signed, and a "proceed order" is issued, Alumco will appoint a Project Manager who is familiar with the procedures and regulations of the company and the trade in general, and has good experience in the execution of similar projects, who will be responsible for the management of the works according to the following.

METHODOLOGY STATEMENT

PREPARATION WORKS

1.1 Shop Drawings:

The first step in the preparation works is the issuing of concept design architectural and construction drawings. The project drawings are re-checked and any modifications to the tender drawings are highlighted. In parallel, meetings might be arranged with the Project Architect or Consultant to discuss the project requirements, and accordingly, the process of drafting of the shop drawings can be launched. The plans and elevations are drawn for the entire of the works and detailed sectional drawings are prepared for each particular type of application. The technical study of the project is handled by a team of architects, structural engineers and draftsmen assigned within Alumco's Technical Department for the specific project, reporting to the Technical Manager and in close coordination with the Project Manager. The drawings are checked by the Team Leader, Technical Manager and then Project Manager and then submitted for approval. Alumco's standard submission forms will be used to keep a clear record of the drawings .

After the process of modifications and adjustment as per the consultant's requirements, and after the shop drawings and the structural calculations are approved, a final set of drawings is issued for construction. The drawings are issued in several copies as required by the project specific conditions, one copy to the client, one to the consultant, one to the main contractor, one office file and one copy for the Site Manager / Supervisor.

1.2 Preparation of Material index Lists:

After the first submission of drawings, and the receipt of the consultant's comments and/or approval, the aluminium and glazing "Material Index Lists" are prepared. The MIL will include the different references and quantities of the aluminium profiles, gaskets and accessories. A draft glass B.O.O. is prepared and followed by one with the exact cutting sizes after opening sizes are checked on site.

1.3 Execution Schedule:

Execution schedule will be prepared and discussed with the main contractor and will be submitted to the consultant for approval.

1.4 Procurement:

Aluminum profiles, gaskets, glass, accessories, steel, stainless steel, and other material are ordered according to the MIL. The materials are ordered in one or several lots depending on the progress of the site, and the program for the execution of the works.

1.5 Site Visits - Set up of office:

At the same time, the Site Manager/ Supervisor will visit the site to become acquainted with the site conditions. The logistics according to which the works are to be executed will be determined to best suit the site conditions. A detailed Method Statement will be prepared for particular application requiring a detailed method statement, a site office may be set up, and a representative / site manager may be assigned to stay in the office (once the works start) to ensure a continuous presence on the site, smooth flow of information with the client, and closer

1.6 Site Survey & Measurements:

Once the finishing works are underway, the site will be surveyed and measurements will be taken. Accordingly, cutting lists for aluminum, glass and other works can be prepared, to be used in the fabrication of the frames and ordering of the glass. The glass is ordered according to the cutting lists, the timing of the orders is chosen, so that the glass is received when the installation of the frames is underway.



METHODOLOGY STATEMENT

FABRICATION AND INSTALLATION WORKS

2.1 Protection:

Before the fabrication process of the aluminum frames is started, a team of workers would apply top quality plastic protective tape to all the profiles. The protective tape will ensure that the profiles are not damaged or scratched during handling in the factory, transportation to the site, and installation, thus guaranteeing a final product of high quality.

2.2 Fabrication:

All the fabrication works will be carried out at Alumco's factory by trained Technicians supervised by experienced Foremen and hence is subject to quality control procedures according to ISO requirements, and in accordance with the company's QA/QC plan. Most of our fabrication technicians and helpers have worked on High Quality International System for a period exceeding 5 years, whereas the supervisors have experience exceeding 10 years in the aluminum systems. Although we prefer that most of the manufacturing operations to be carried out at the factory under the supervision and control of the quality officer, nevertheless, a small equipped workshop might be set up on the site for some on site operations, if required by the project conditions. Please note that our Quality Manual includes a detailed work instruction for the fabrication process, incorporating inspection

2.3 Transportation of frames to the site:

Once the site conditions enable the start of the installation of the frames, the frames will be transported to the site and stored in the storage area. All gaskets and accessories are also stored in their original packing thus preventing any damage or scratches. Particularly, the EPDM gaskets are stored in their cardboard boxes, not touching the ground, in order to avoid any damage by moisture or humidity.

2.4 Storage:

The General Contractor will provide a suitable protected area at site for storing the fabricated units prior to installation.

2.5 Installation:

Once the finishing works are underway, and the site is clean to a certain extent, the installation of frames can start. The frames will be installed by experienced technicians / helpers supervised by supervisors with high level of experience in the installation of the various systems. Consumable materials used for the installation are top quality products. Once the installation of the frames is underway, a second team of technicians will start the installation of the glass, and thus the installation of the frames and the glass will move in parallel. During the duration of the installation works, one team of workers will ensure that the protective tape is applied to the frames at all times. This team is responsible for replacing all damaged or torn off tapes, so that the frames are protected at all time until the handing over of the works. Please note that our Quality Manual includes a detailed works

2.6 Co-ordination:

The Project Manager/ Site Manager will attend all the site and co-ordination meetings, in order to ensure continuous cooperation with the client and site management personnel and achieve the goals within the main program. We may also issue weekly reports to the site management team on the progress of the fabrication and installation works, as well as any problems encountered during installation if required by the contractor.



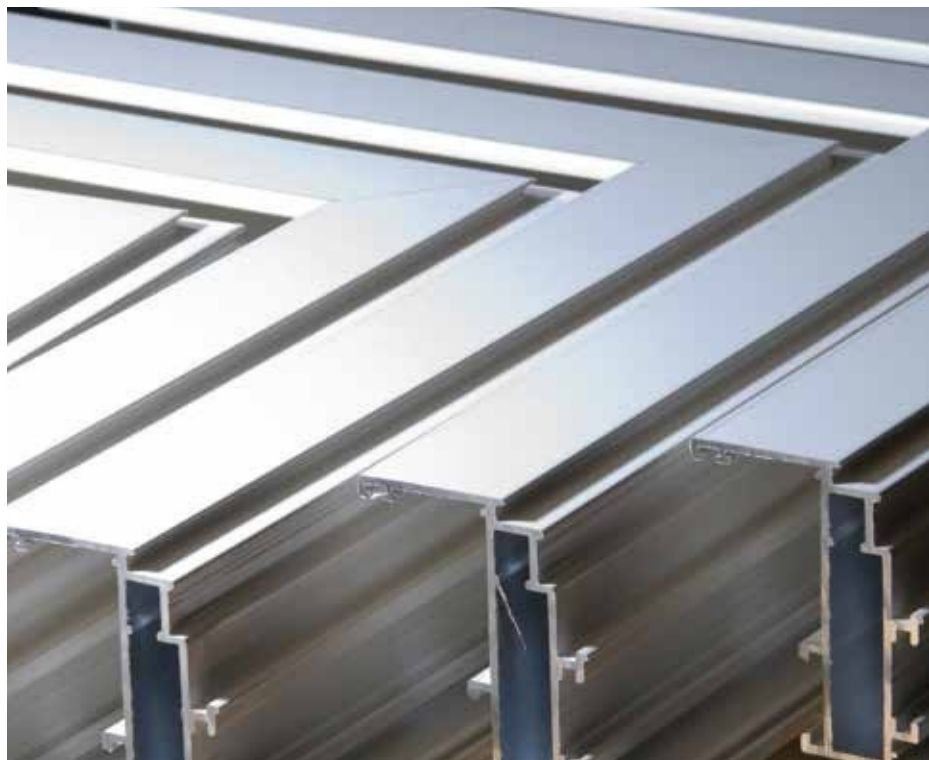


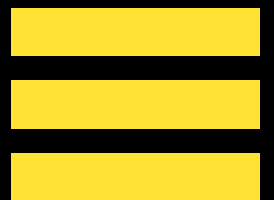


RESOURCES - PREMISES

Alumco KSA was established with premises in excess of 6,000sq.m divided between a factory of 4,000sq.m and an office building of 2,000sq.m

State of the art machinery (including CNC machines) is used to execute some of the Kingdom's most prestigious projects. The company has proudly grown to exceed 600 employees in 5 years.





CURTAIN WALL UTILIZED SYSTEM



CURTAIN WALL UTILIZED SYSTEM

Project: ASSILA Hotel









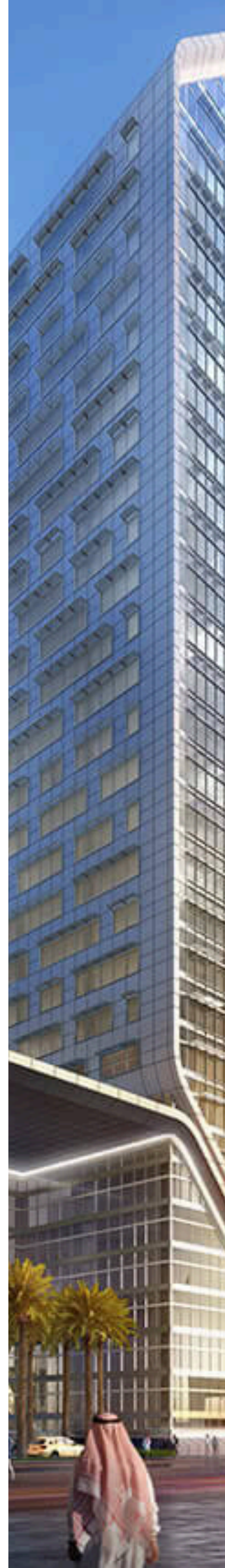
CURTAIN WALL UTILIZED SYSTEM

Project Name: Etihad Towers



CURTAIN WALL UTILIZED SYSTEM

Project: SABB Bank Headquarters



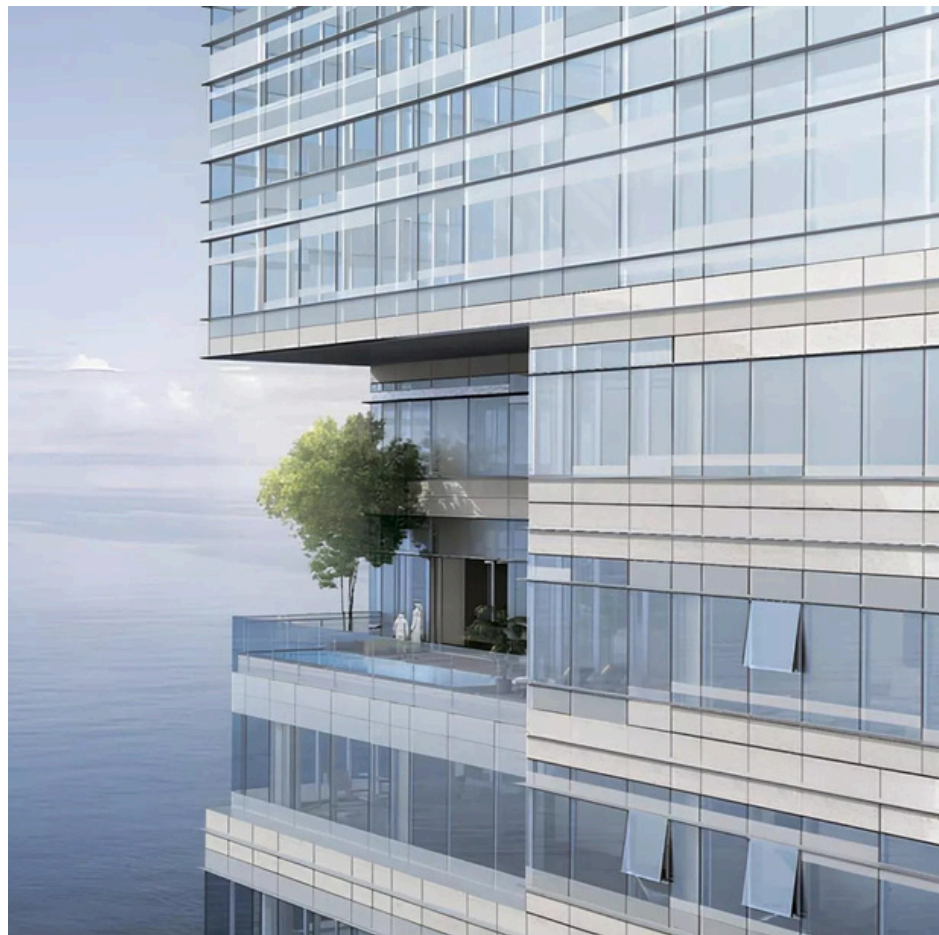


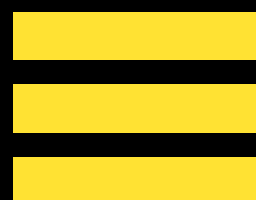




CURTAIN WALL UTILIZED SYSTEM

Project : Golden Tower





CURTAIN WALL STICK SYSTEM



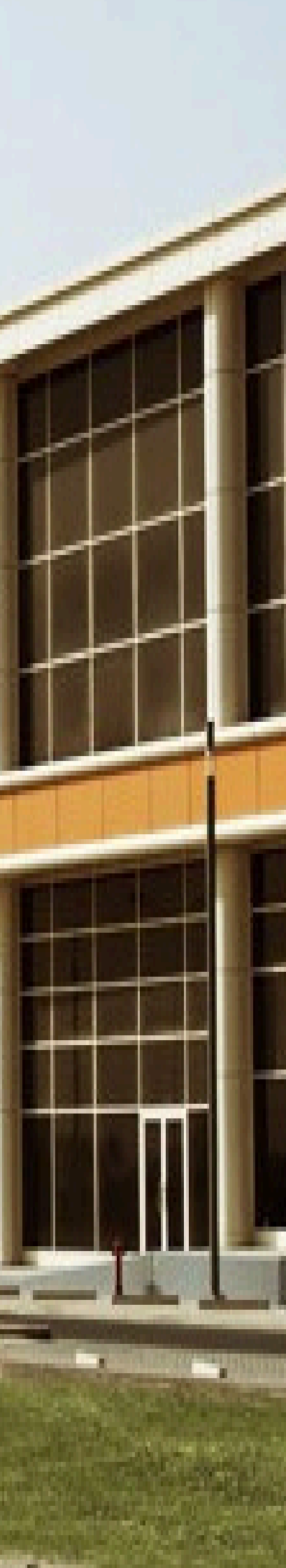
CURTAIN WALL STICK SYSTEM

Project: BEAC Bank









CURTAIN WALL STICK SYSTEM



Project : Barwa Commercial Avenue

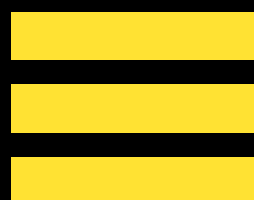


CURTAIN WALL STICK SYSTEM

Project: JODP - Phase 4



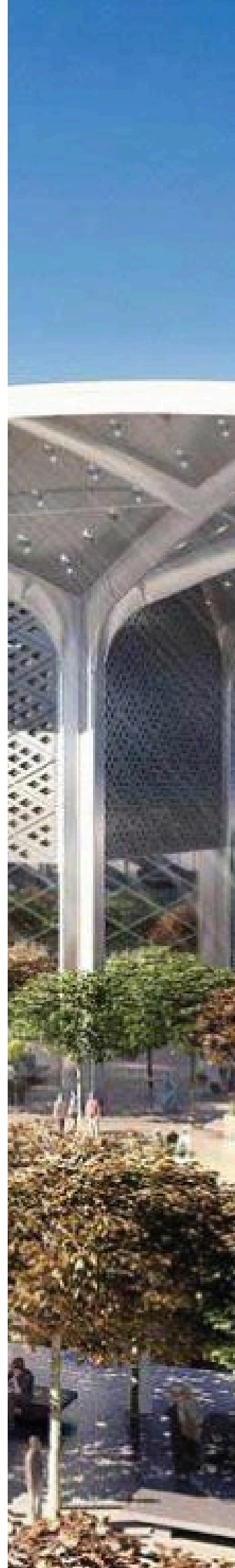




INTERNAL PACKAGES

INTERNAL PACKAGES

Project : Haramain Railway – Makkah Station







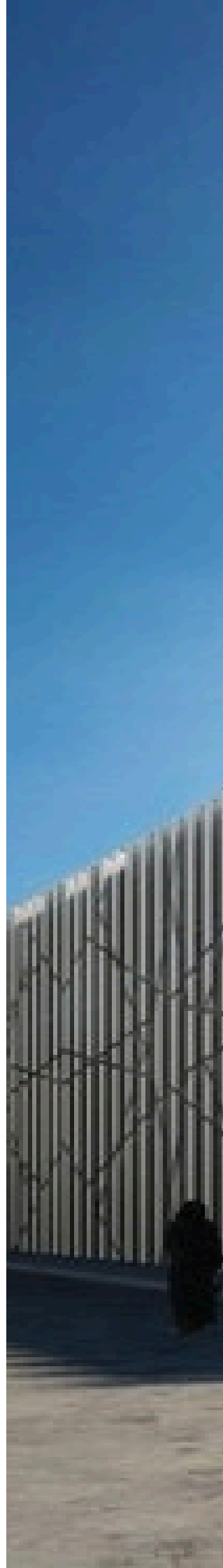
INTERNAL PACKAGES

Project : King Faisal University

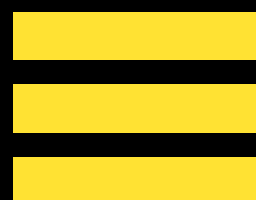


INTERNAL PACKAGES

Project Name: Hamad General Hospital







CURTAIN WALL SPIDER SYSTEMS



CURTAIN WALL SPIDER SYSTEMS

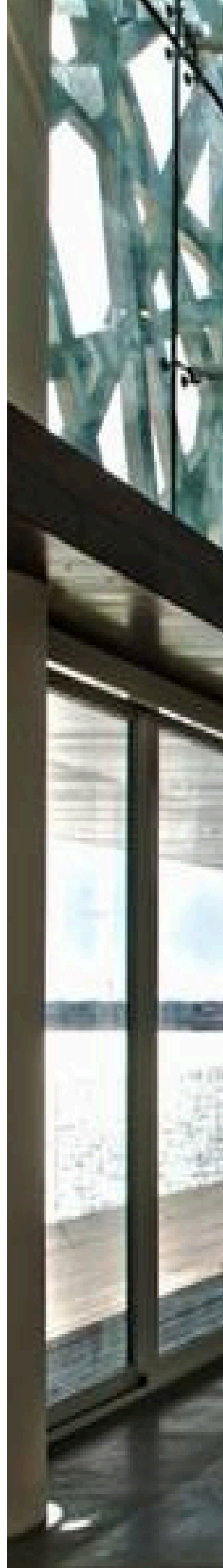
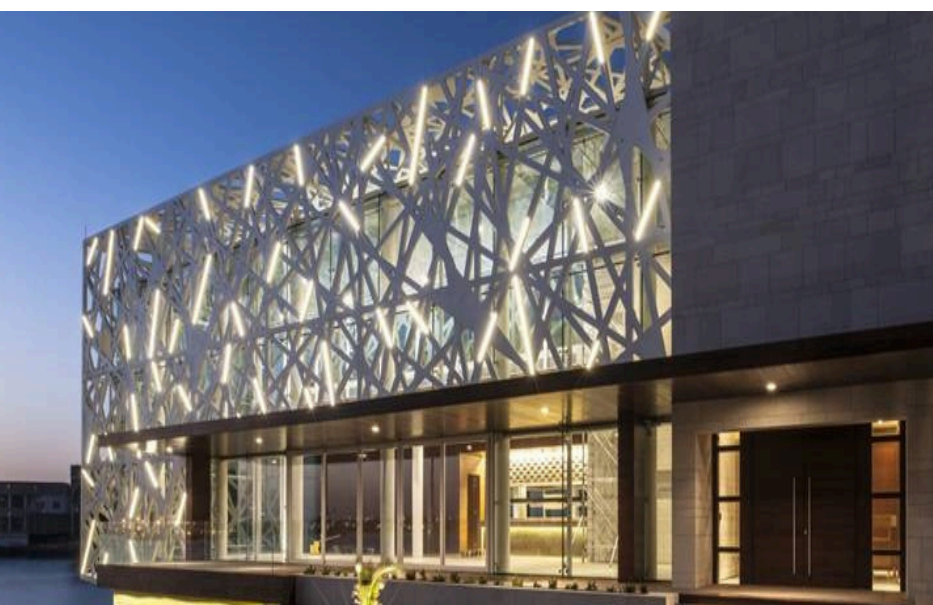
Project : Kingdom Hospital





CURTAIN WALL SPIDER SYSTEMS

Project : Marina Private Residences



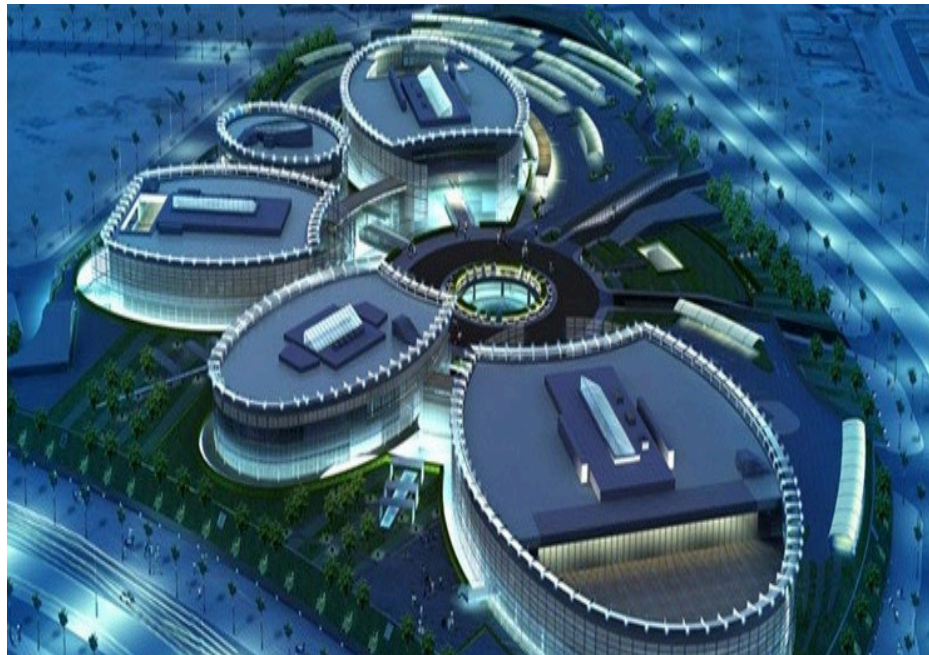


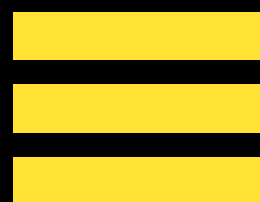




PROJECTS UNDER CONSTRUCTION

Project : Supreme Education Council Ministry
of higher Education





**DOME & SKYLIGHTS,
UNIVERSITIES
& AIRPORTS**





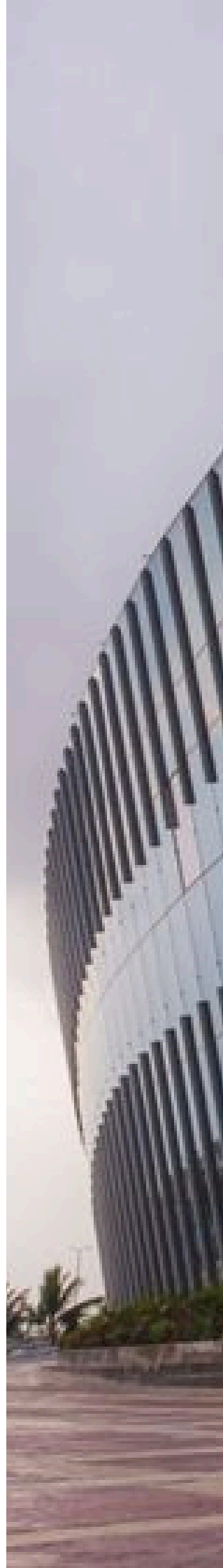
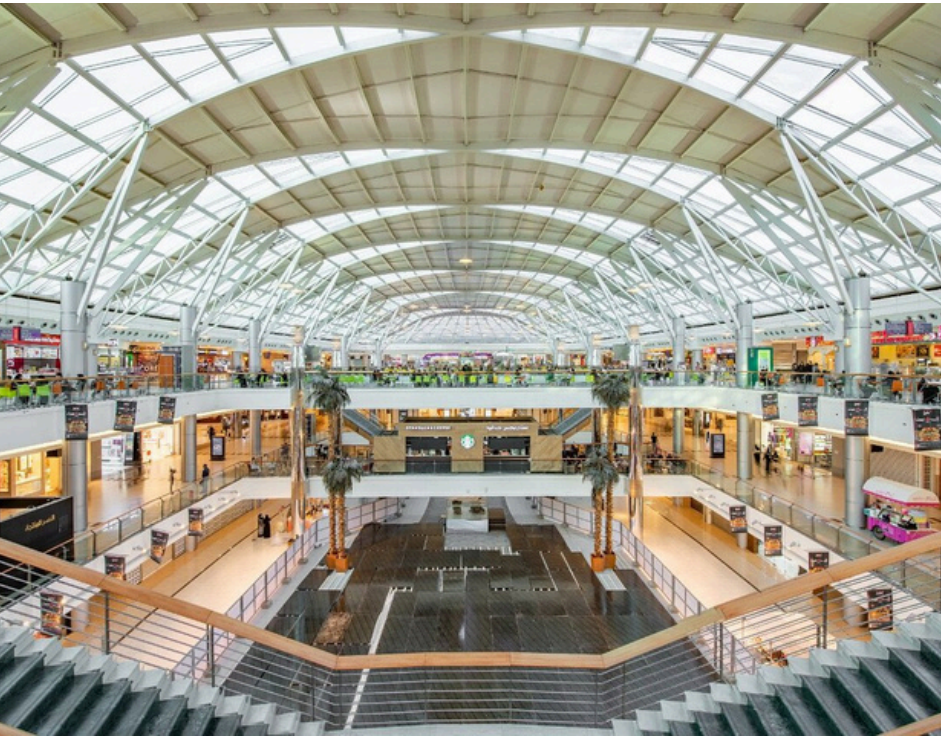
AIRPORTS

Project : King Abdulaziz International Airport



DOMES & SKYLIGHTS

Project : Red Sea Mall





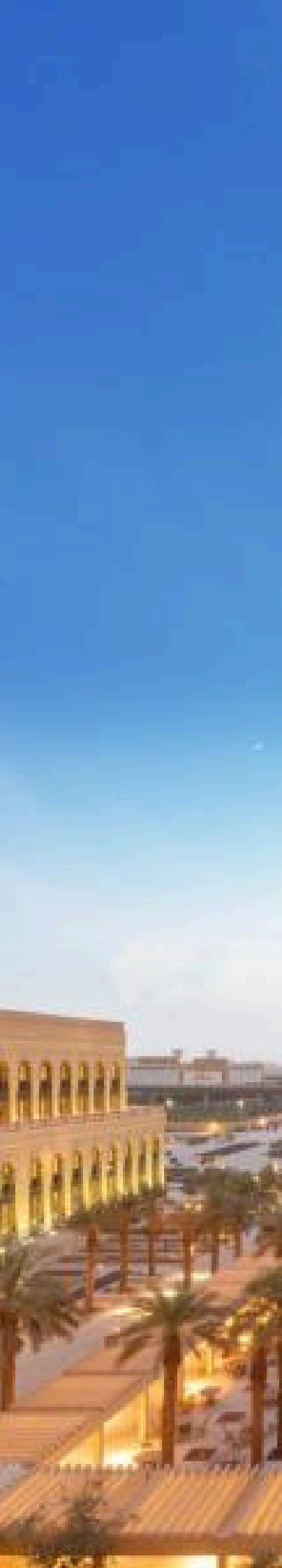
اطلعي جهالك
وزفلك بفسلك

اهي
فهد

واجهي
الغد

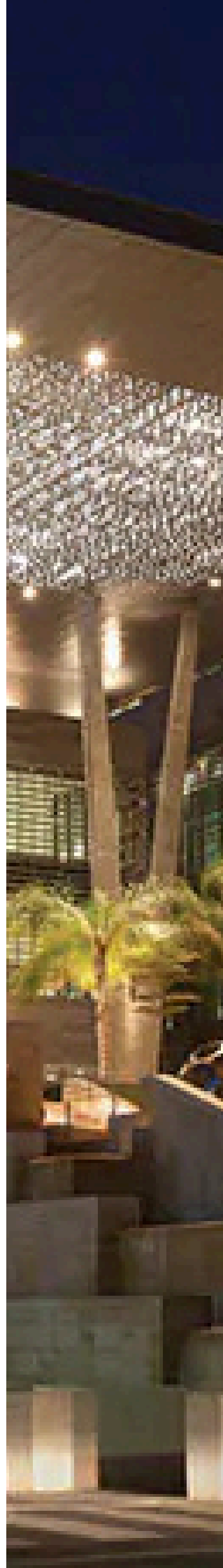
DOMES & SKYLIGHTS

Project : Princess Noura University



UNIVERSITY

Project : KAUST







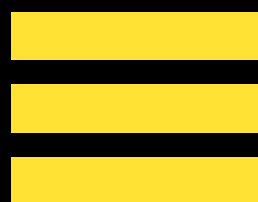




DOMES & SKYLIGHTS

Project : Galleria Mall





DOORS & WINDOWS



DOORS & WINDOWS

Project : Private Palace



ALUMCO CLIENTS







315, Industrial Area,
Jeddah industrial city 1, phase 2
SAUDI ARABIA
+966124221605
+966920025499

